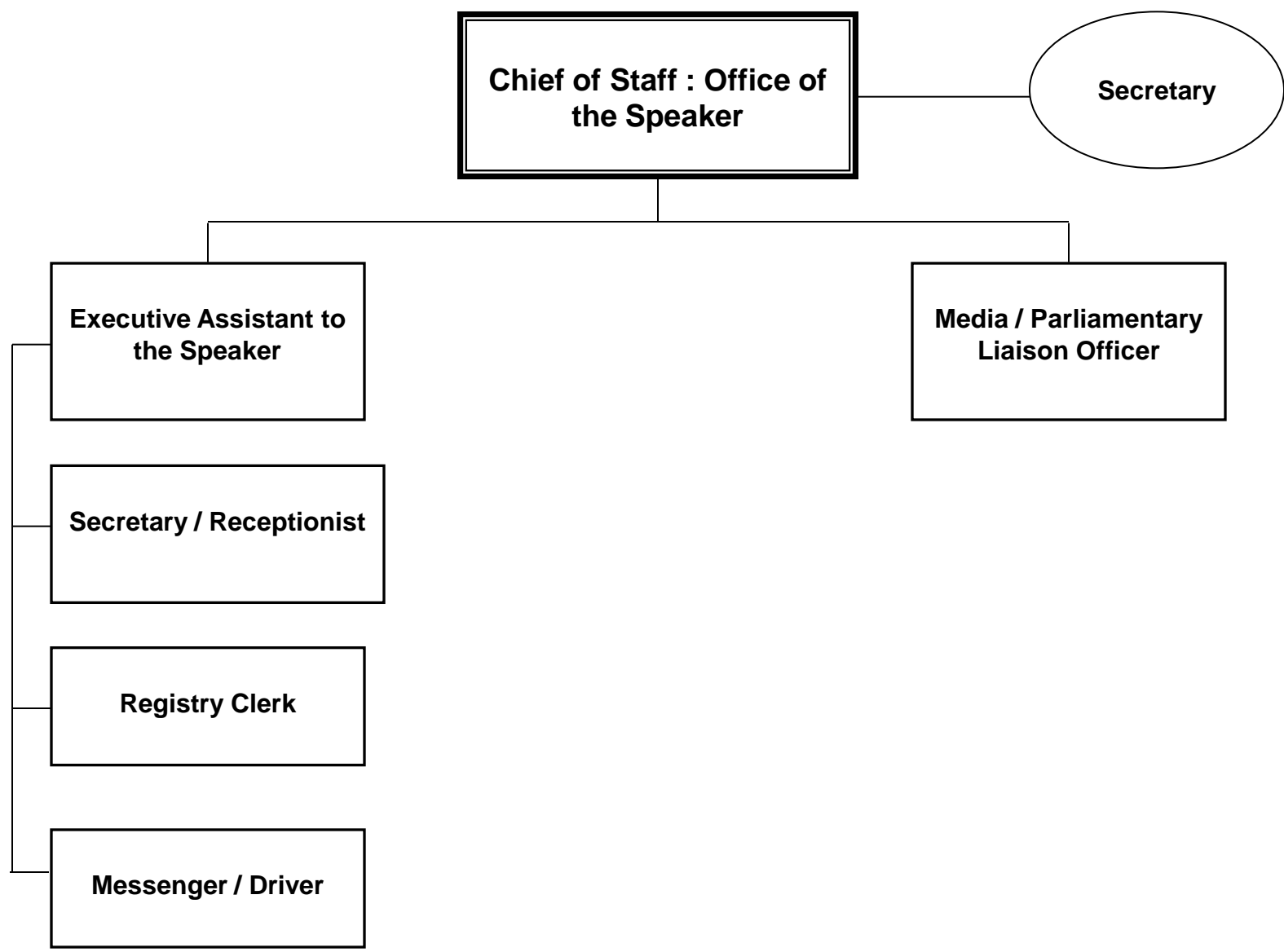
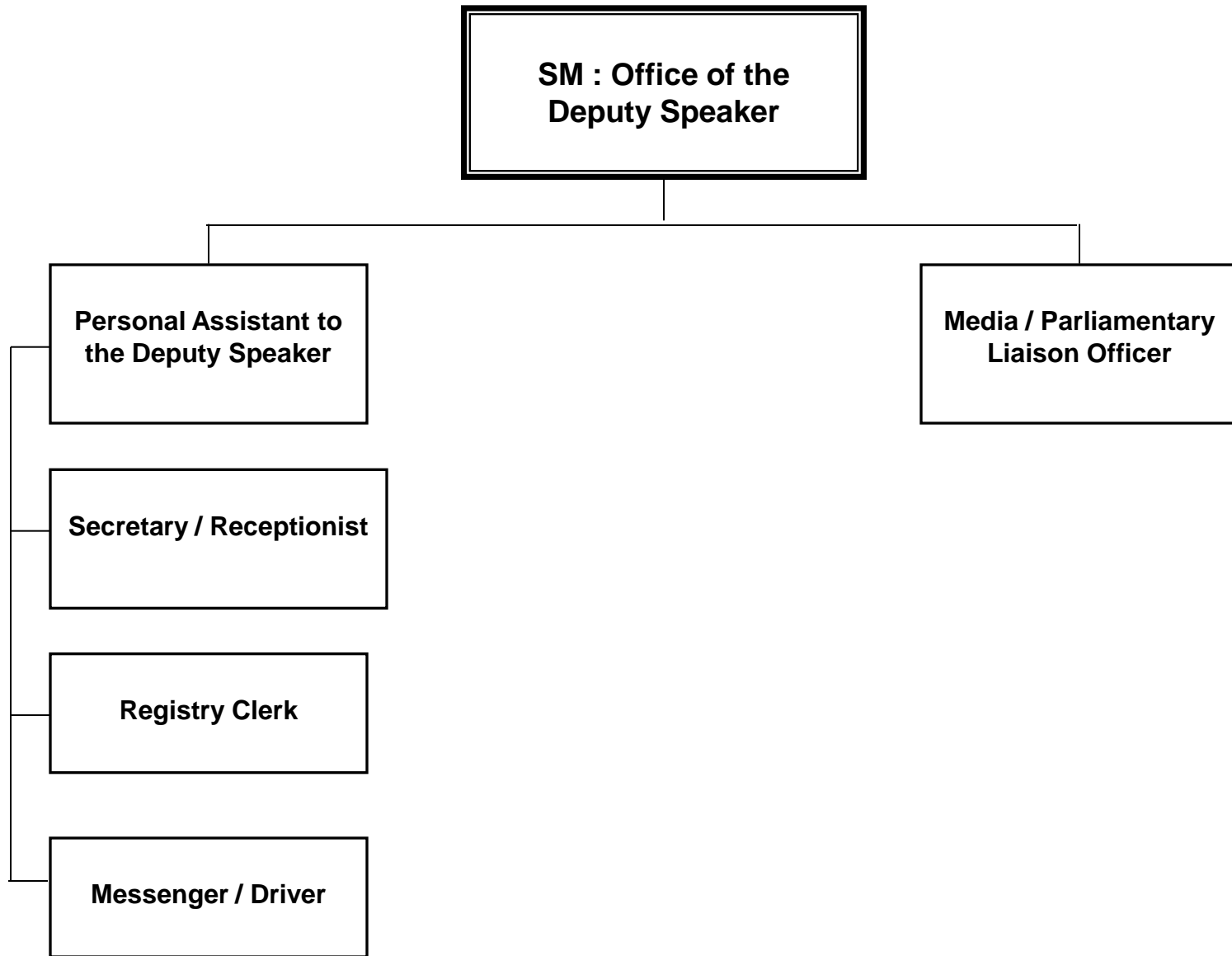




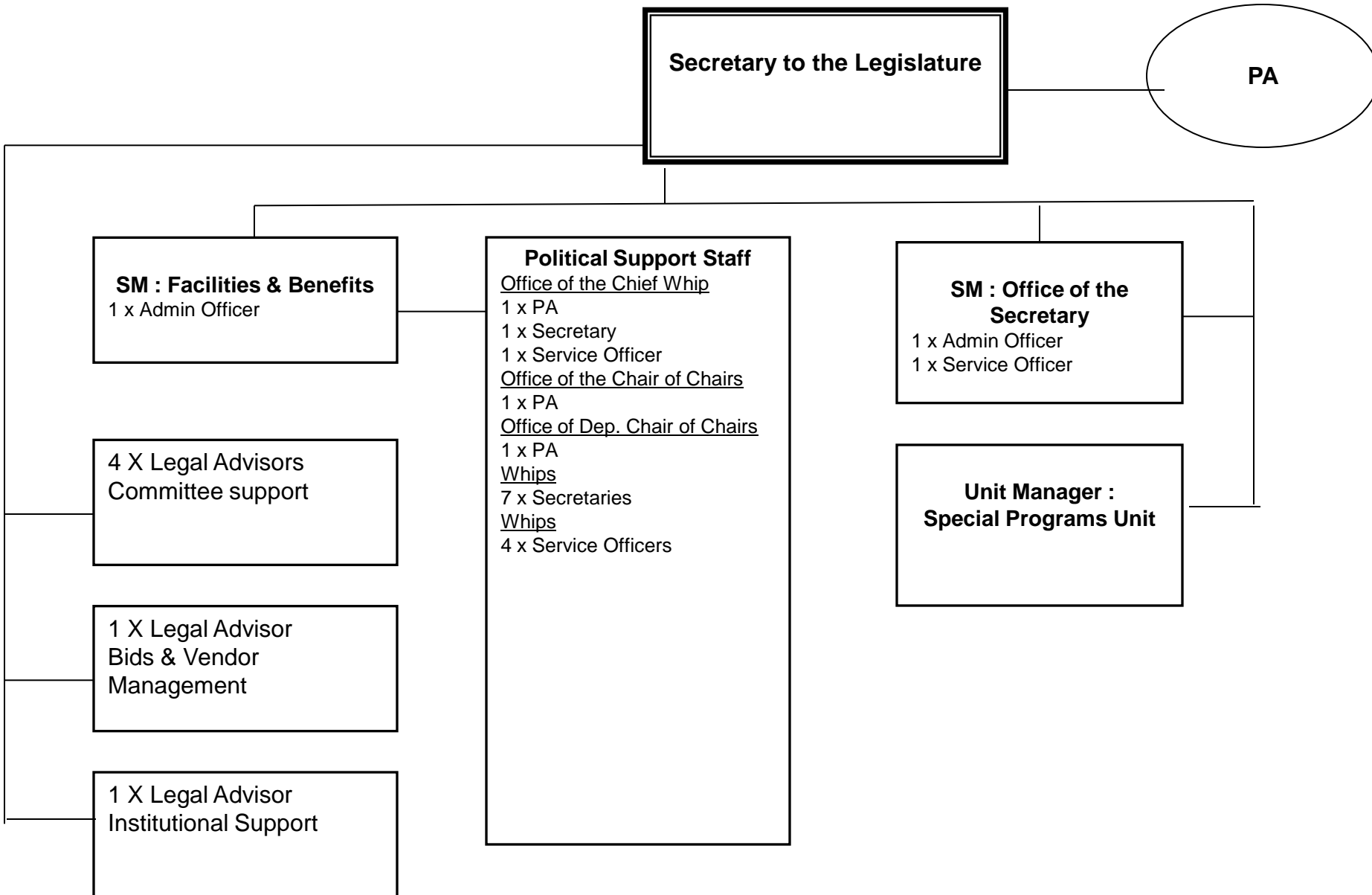
EC Provincial Legislature

Current Year Organogram

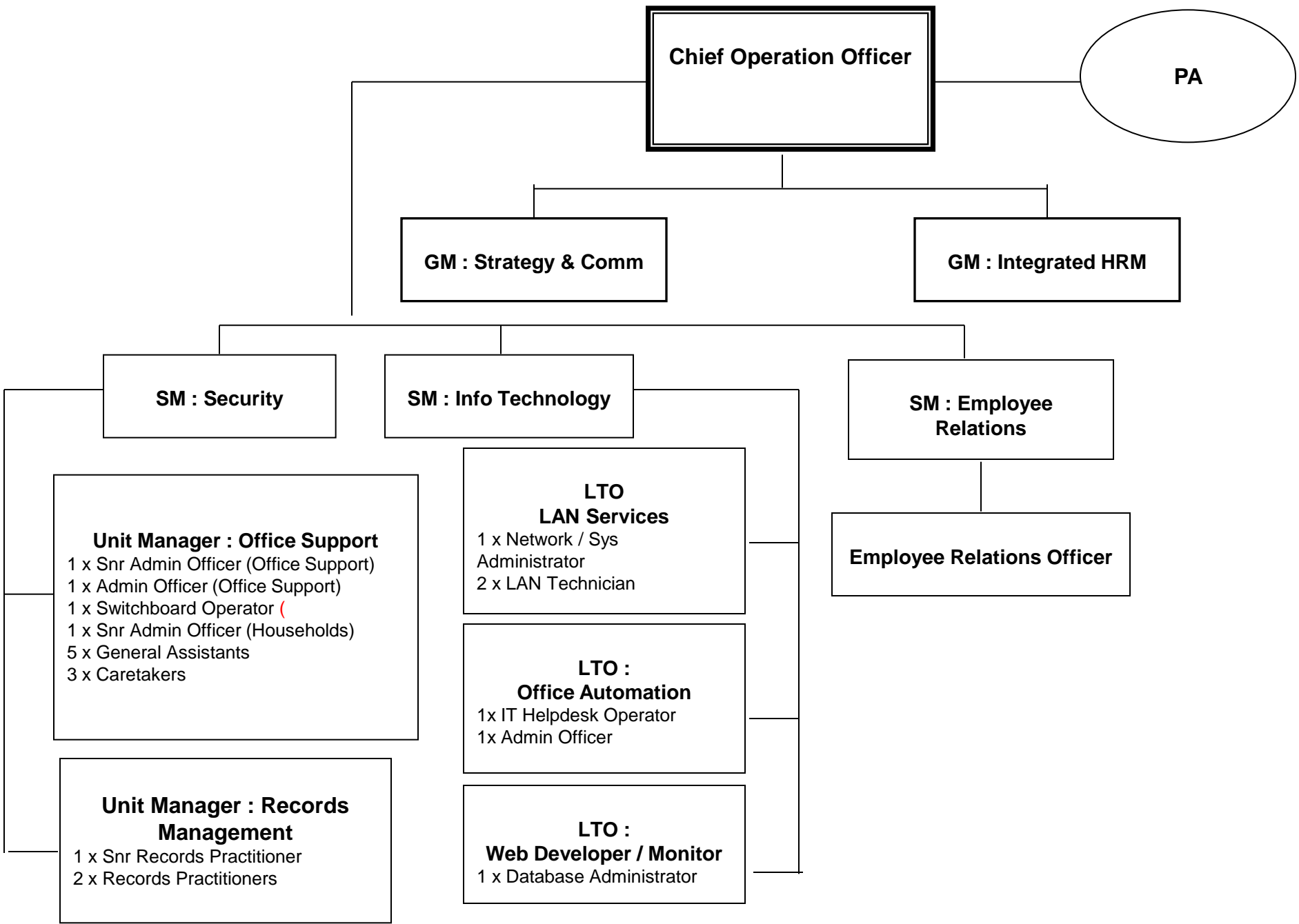




OFFICE OF THE SECRETARY



BRANCH : CORPORATE SERVICES



Chief Operation Officer

PA

GM : Strategy & Comm

GM : Integrated HRM

SM : Security

SM : Info Technology

SM : Employee Relations

Unit Manager : Office Support
1 x Snr Admin Officer (Office Support)
1 x Admin Officer (Office Support)
1 x Switchboard Operator (
1 x Snr Admin Officer (Households)
5 x General Assistants
3 x Caretakers

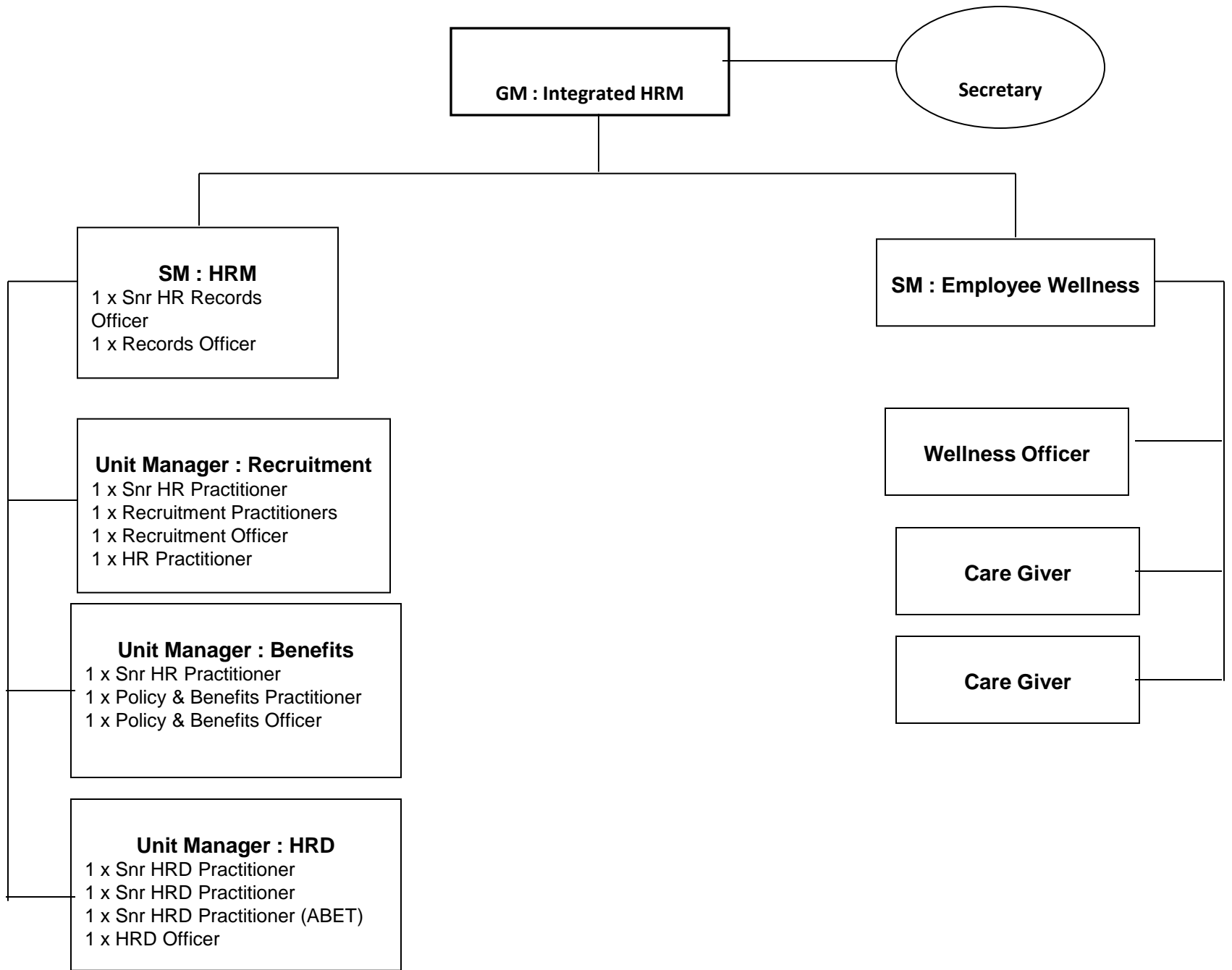
Unit Manager : Records Management
1 x Snr Records Practitioner
2 x Records Practitioners

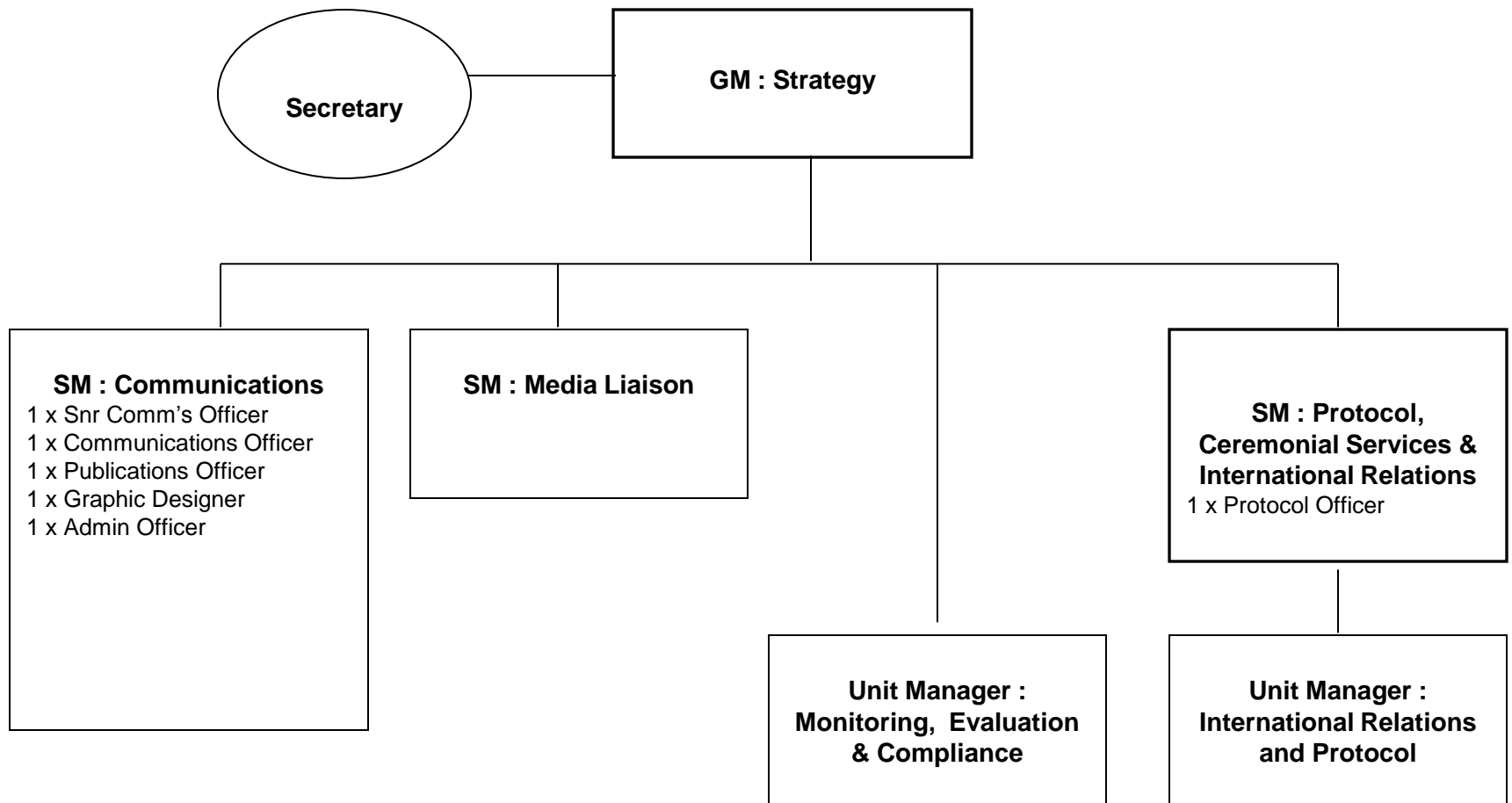
LTO LAN Services
1 x Network / Sys Administrator
2 x LAN Technician

LTO : Office Automation
1x IT Helpdesk Operator
1x Admin Officer

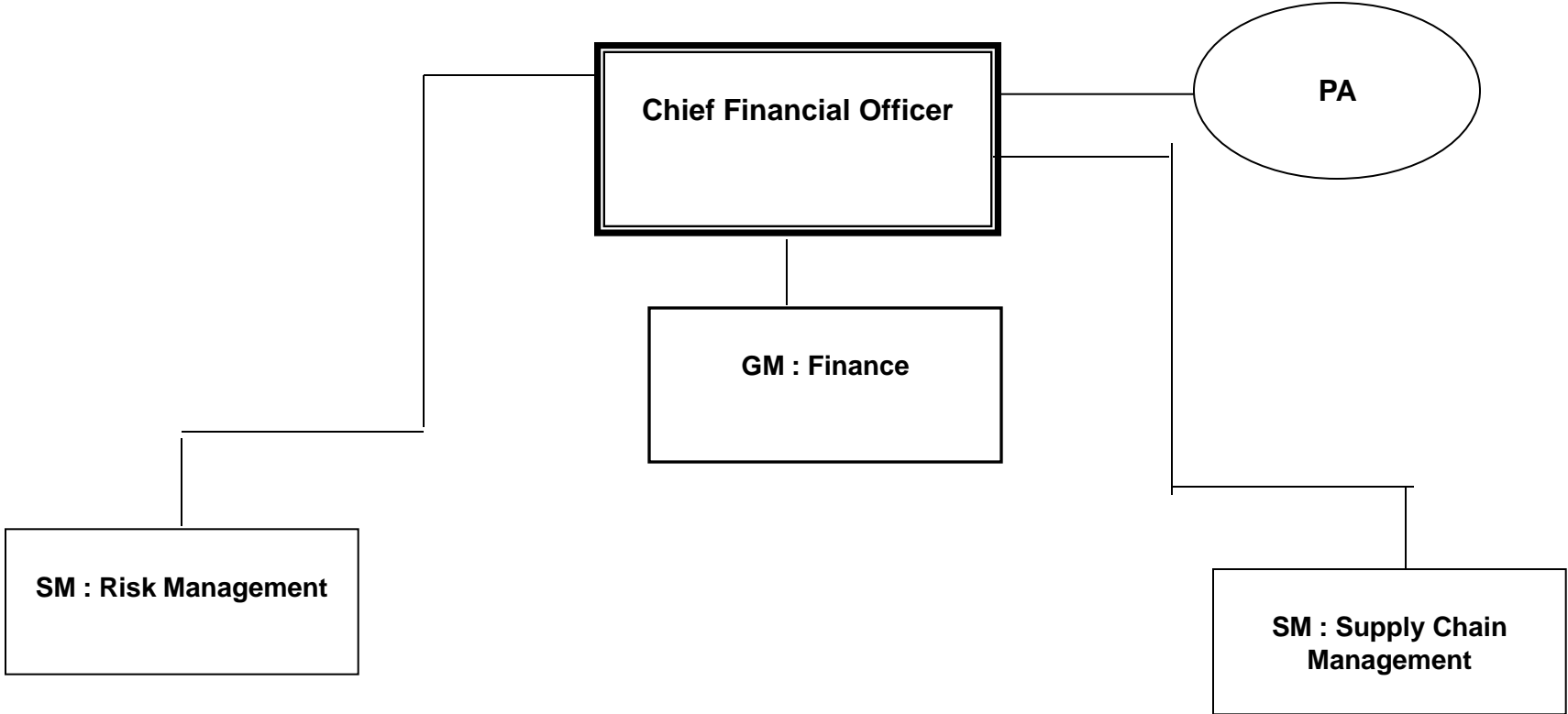
LTO : Web Developer / Monitor
1 x Database Administrator

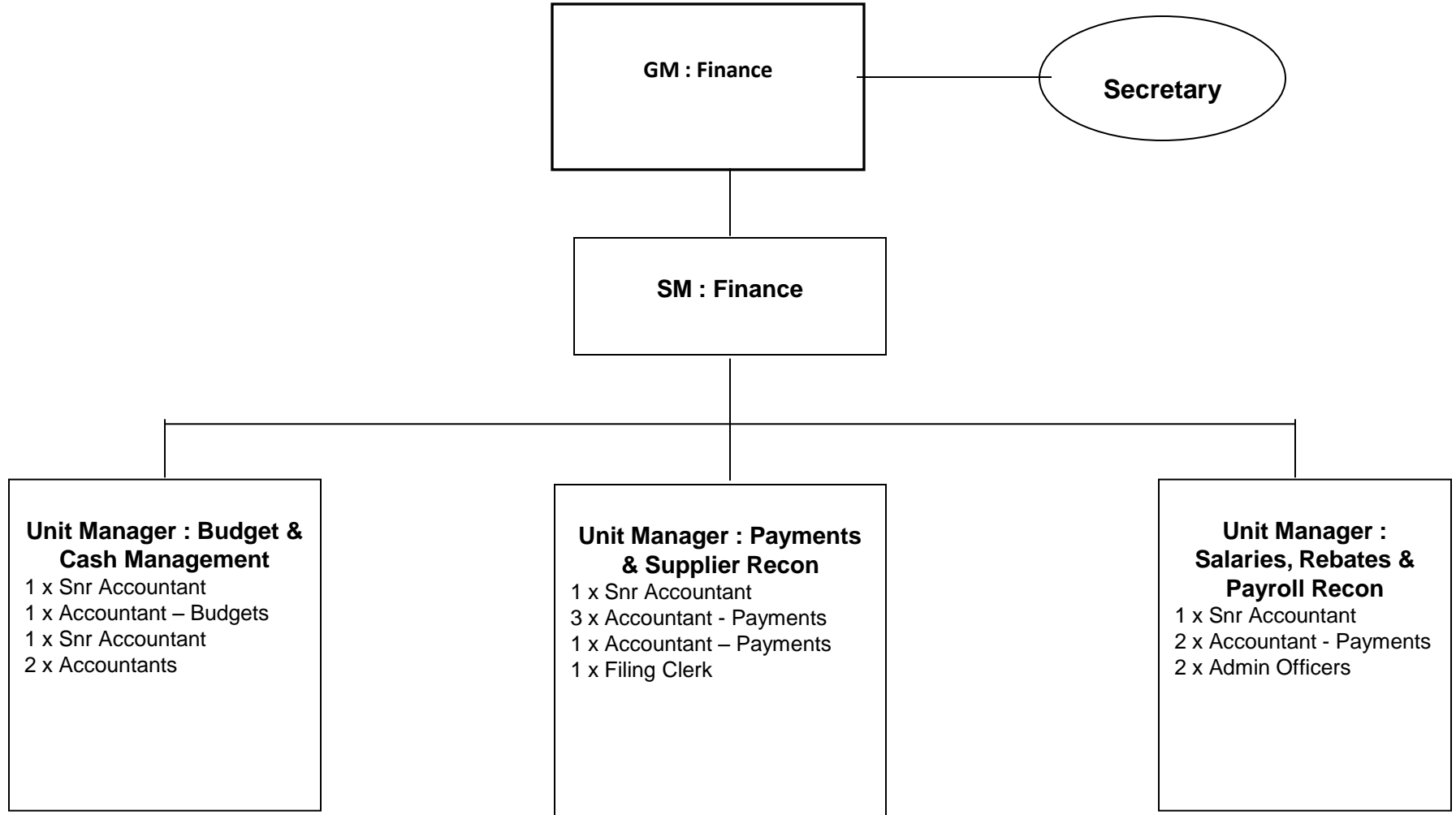
Employee Relations Officer





BRANCH : FINANCIAL MANAGEMENT





**SM : Supply Chain
Management**

**Unit Manager : Procurement
(Acquisition & Demand)**

1 x **Snr Procurement Practitioner**
(Entity Registration, Maintenance & Vetting)
2 x Procurement Practitioner (Procurement)
1 x Procurement Practitioner (Requisitions)
1 x **Snr Admin Officer – Commit**
1 x Admin Officer – Orders & Bookings

**Unit Manager :
Asset Management**

1 x Snr Admin Officer (Assets)
1 x Admin Officer - Assets
1 x **Admin Officer - Assets**
1 x Admin Officer – Comm Tools

**Unit Manager :
Logistics Management**

1 x Transport Control Officer
7 x Drivers
1 x **Snr Admin Officer – Logistics**
1 x Admin Officer – Logistics

BRANCH : PARLIAMENTARY SERVICES

Chief Parliamentary Officer

PA

